

# Venue Accessibility Guide

FOR THE LONDON MATHEMATICAL SOCIETY  
DE MORGAN HOUSE



## Contact

Contact for Accessibility Enquiries: Andrew Dorward

✉ [andrew.dorward@lms.ac.uk](mailto:andrew.dorward@lms.ac.uk) or [roombookings@lms.ac.uk](mailto:roombookings@lms.ac.uk)

☎ 020 7927 0806

🌐 <https://www.lms.ac.uk/> or / <https://www.demorganhouse.org.uk/>

## At a Glance



Step-free access

- The building has step-free access from street level to the lower ground floor conference rooms via an external platform lift. The Hardy Room, located on a raised area within the lower ground floor, is also accessible via a lift.



Accessible Toilets

- An accessible toilet is located at lower ground floor level.



Hearing

- A hearing loop is fitted in the Hardy room, all other meeting rooms do not have this facility.
- The audible fire alarm is fitted with flashing beacons to toilets only.



Visual

- There are no specific features for visually impaired users.

## Getting Here

### Site Address

London Mathematical Society

De Morgan House

57-58 Russell Square

London

WC1B 4HS

### **Public Transport**

- The nearest tube station is Russell Square, located within 300m of the building.
- The nearest accessible tube station is Kings Cross St Pancras.
- The nearest bus stop is in Russell Square, located within 100m of the building.

### **Taxi**

- You can get a taxi to the building using:  
London Black Taxi: +44 (0)20 3984 4515  
Book A London Cab: +44 (0)20 3105 4406
- A wheelchair accessible service is available.

### **Parking**

- On street parking is available in Russell Square.
- There are no accessible parking bays within 100m of the building.

## **Arrival**

### **Approach Route**

- The pavement through Russell Square on the approach to the building is set to an acceptable gradient and has a firm and level surface.
- The pavement achieves a clear width of more than 2m.

### **External Steps**

- There are 5 steps up to the raised ground floor entrance and 11 steps down from street level to the lower ground floor entrance.
- The external steps to the entrances have no contrasting nosings.
- The external steps have no tactile paving and no handrails.



### Entrances

- The raised ground floor main entrance doors achieve a clear width of 680mm through a single leaf and 1360mm through both doors.
- The lower ground floor entrance door achieves a clear width of 900mm.
- Entrance doors are not power assisted and require approx. 70 newtons force to open.
- An intercom is available. LMS guests should use the 'LMS' button, and conference guests should use the 'Meetings/Events' button, to gain access.



### Reception/Information Desk

- The building has a small reception counter in the raised ground floor entrance.
- The reception counter does not have a hearing loop.
- Staff are trained to meet and greet all visitors on arrival.

### Step-free access

- The building has step-free access from street level to the lower ground floor conference rooms via an external platform lift. Please contact the venue team in advance of arrival on 0207 927 0800 or [roombookings@lms.ac.uk](mailto:roombookings@lms.ac.uk). The venue team will be able to assist with operating the lift.



### Getting Around Inside

#### Horizontal Circulation and Doors

- All visitor meeting rooms and break-out facilities are located at lower ground floor level.
- The raised ground floor entrance lobby and corridors achieves a width of 2400mm narrowing to 1000mm at the main stair to the lift and lower ground floor.
- The main lower ground floor corridor achieves a width of 1800mm.
- The lower ground floor corridor narrows to as little as 970mm and turns through 90 degrees along the route to the accessible toilet.
- Internal corridor doors achieve a width of between 750mm and 830mm.



### Lifts

- A lift serving all floors is located at the rear of the building.
- Except at lower ground floor level, access to the lift is stepped at each floor level.
- A clear space of 1000mm is available in front of the lift.
- The lift doors achieve a clear width of 700mm.
- The lift car achieves clear dimensions of 850mm deep by 1250mm wide.
- Control buttons have embossed text and braille markings.
- Audio announcement of floor level and door opening is in place.



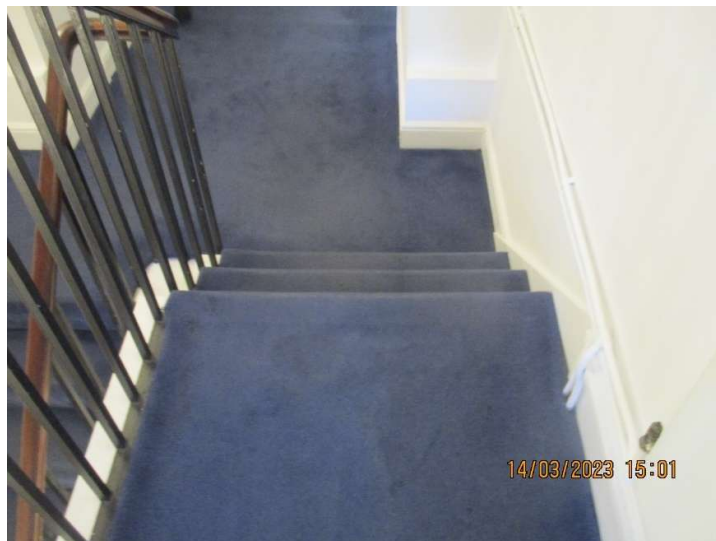
- A vertical platform lift is located at the rear to access the Hardy meeting room and the garden with outside seating.
- The vertical platform lift doors achieve a clear width of 850mm.

- The platform achieves clear dimensions of 1400mm deep by 760mm wide.
- Control buttons have embossed text and braille markings.



### Stairs

- The main stairs are located next to the main entrance at raised ground floor level.
- A flight of 3 steps is located across the raised ground floor corridor on route to the lift.
- Stairs are not fitted with contrasting nosings.
- Stairs have handrails to one side only.



## Toilets and Changing Facilities

### Accessible Toilets

- The visitor accessible toilet cubicle is located at lower ground floor level.

- The cubicle door achieves a clear width of 850mm.
- The cubicle achieves overall dimensions of 2100mm deep by 1800mm wide.
- The cubicle is designed for left hand transfer.
- Grab-rails are provided to the WC and basin positions.
- The cubicle is fitted with a pull cord alarm.
- The WC and basin are fitted with lever flush and mixer tap.



#### Standard Toilets

- Single occupancy any gender visitor toilet cubicles are located at ground and lower ground floor levels.
- Basins are fitted with lever type taps. WCs are fitted with a push button flush.



## Meeting Rooms

### Hardy Meeting Room

- The Hardy meeting room is the largest available room.
- The meeting room door achieves a clear width of 860mm.
- The meeting room achieves overall dimensions of 6.5m deep by 10.7m wide.
- A manoeuvring space of at least 1500mm by 1500mm is available at the side of the tables which are portable and can be moved by staff if required.
- The tables have knee space of approx. 700mm above floor level.
- The chairs are fitted with back and arm rests.
- The meeting room is fitted with a hearing loop.



### Burnside Meeting Room

- The meeting room door achieves a clear width of 860mm. The bi-folding doors can be opened-up to the main corridor.
- The meeting room achieves overall dimensions of 4.0m deep by 6.0m wide.
- A manoeuvring space of at least 1500mm by 1500mm is available at the side of the tables which are portable and can be moved by staff if required.
- The tables have knee space of approx. 700mm above floor level.
- The chairs are fitted with back and arm rests.
- The meeting room is not fitting with a hearing loop.



### Sylvester Meeting Room

- The meeting room door achieves a clear width of 860mm. The bi-folding doors can be opened-up to the main corridor.
- The meeting room achieves overall dimensions of 4.0m deep by 5.2m wide.
- A manoeuvring space of at least 1500mm by 1500mm is available at the side of the tables which are portable and can be moved by staff if required.
- The tables have knee space of approx. 700mm above floor level.
- The chairs are fitted with back and arm rests.
- The meeting room is not fitting with a hearing loop.



### **Cayley Meeting Room**

- The meeting room door from the main corridor achieves a clear width of 850mm.
- The meeting room door from the stair lobby achieves a clear width of 770mm.
- The meeting room achieves overall dimensions of 6.0m deep by 5.7m wide.
- A manoeuvring space of at least 1500mm by 1500mm can be made available at the side of the tables which are portable and can be moved by staff if required.
- The tables have knee space of approx. 700mm above floor level.
- The chairs are fitted with back and arm rests.



### **Break-out Area**

- The corridor route from the main stair and lift achieves a width of 970mm.
- The area achieves overall dimensions of 6.7m deep by 6.0m wide.
- A manoeuvring space of at least 1500mm by 1500mm is available at the side of some of the tables which are portable and can be moved by staff if required.
- The tables have clear knee space beneath of less than 700mm high.
- The chairs are fitted with back rests only.
- The servery counter does not have a low-level position with knee space.
- Staff are trained to serve refreshments and to provide assistance to visitors.



## Getting Around Outside

### Rear Courtyard Garden

- A small garden with outside seating is available to the rear at lower ground floor level. The garden can be accessed using the platform lift or steps.
- The external steps to the outside seating have no contrasting nosings and a single handrail.



## **Customer Care & Support**

### **Equipment**

- Audio visual equipment is available in the meeting space for presentations.

### **Booking Procedures**

- Staff are trained to ascertain the needs of meeting attendees prior to arrival.
- Meeting rooms are set up to ensure adequate manoeuvring space for individual attendees.

### **Evacuation**

- The fire alarm has beacons fitted to toilet areas only.
- There is no disabled refuge system to the raised or lower ground floor.
- There are no evacuation chairs or assisted evacuation plan in place.

COMPLETED BY EVANS JONES MARCH 2023

Update: January 2026 – Andrew Dorward